



Interprofessional Distance Learning Opportunity

Target Audience: Family/Specialist Physicians and all other Health Care Professionals

Day of the week: Monday | Time: 12:00 - 1:00 PM (SK time)

SESSIONS, SPEAKERS & SESSION LEARNING OBJECTIVES

FEB 6 | EVALUATION & MANAGEMENT OF CHRONIC KIDNEY DISEASE (CKD) IN THE ELDERLY

Presenter: Dr. Rod Stryker

- Identify the criteria for diagnosis of CKD in the elderly
- Summarize a management plan, including nephrology referral and options/outcomes for end-stage kidney disease

FEB 13 | SECONDARY HYPERTENSION (HTN)

Presenters: Dr. Obaid Syed Amin

- Recognize the common causes of secondary HTN
- Describe treatment recommendations for the common causes of secondary HTN

FEB 27 | WHAT WE SUGGEST: KIDNEY VIGNETTES

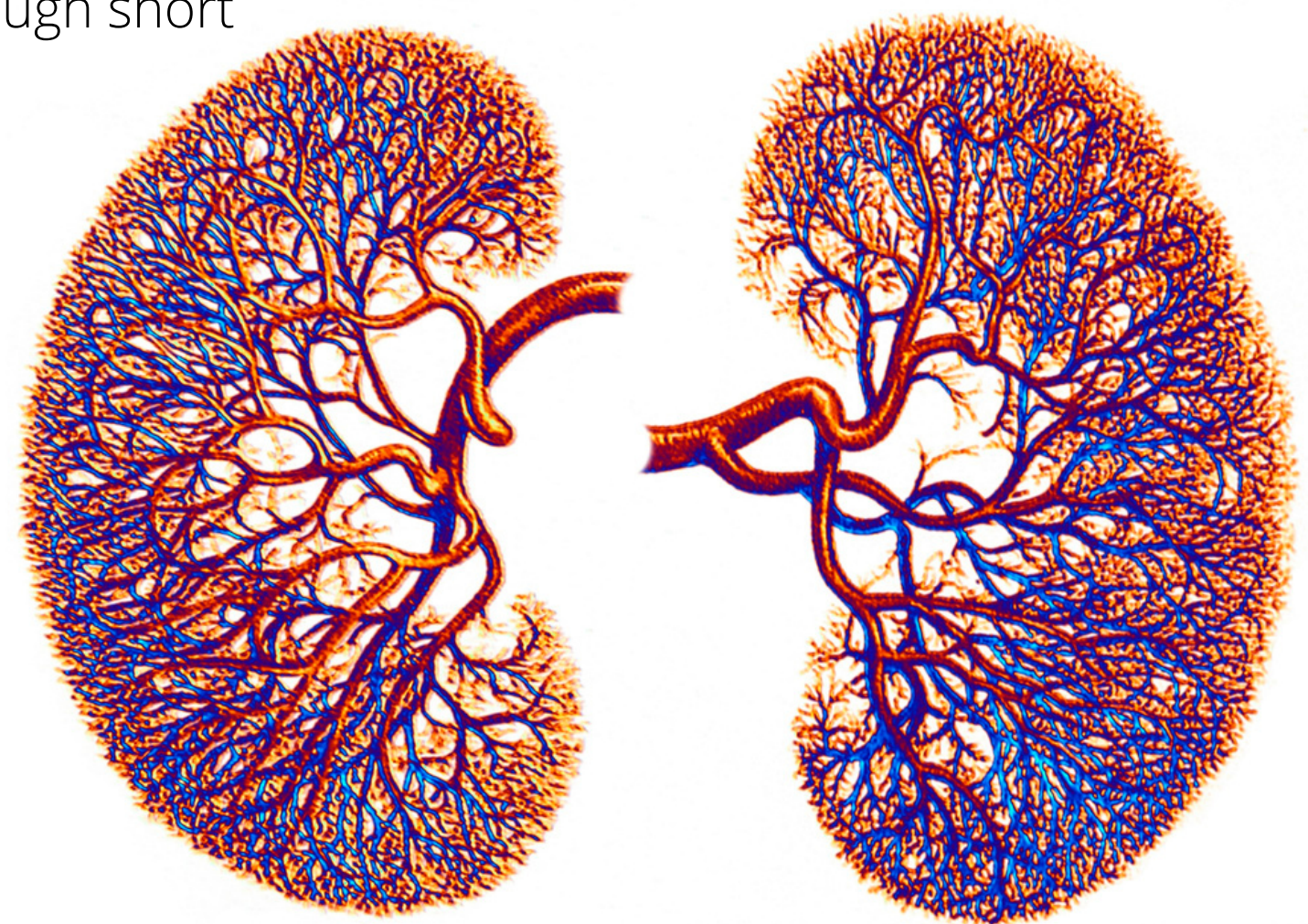
Presenter: Dr. Chance Dumaine & Dr. Lookman Abdul

- Acquire practical knowledge about common kidney problems through short case presentations and discussion.

BE WHAT THE WORLD NEEDS

**Zoom links will be emailed weekly to all participants.*

*All sessions will be recorded. We encourage learners to attend the live sessions.
The recordings will be made available to all registrants. Don't miss out on the great content!*



2022-2023
CME Webinar Series

REGISTER
NOW!



CME Webinar Series - [Website](#)
Email for more info: cme.events@usask.ca

Royal College of Physicians and Surgeons of Canada: This event is an Accredited Group Learning Activity (Section 1) as defined by the Maintenance of Certification program of the Royal College of Physicians and Surgeons of Canada, and approved by the Continuing Medical Education Division, University of Saskatchewan for up to **3.0** credit hours.

The College of Family Physicians of Canada: This one-credit-per-hour Group Learning program meets the certification criteria of the College of Family Physicians of Canada and has been certified by the Continuing Medical Education Division, University of Saskatchewan for up to **3.0** Mainpro+ credits.

Other Healthcare Professionals: Participation in this conference may be included as part of the continuing education and competence programs established by individual professional associations.

